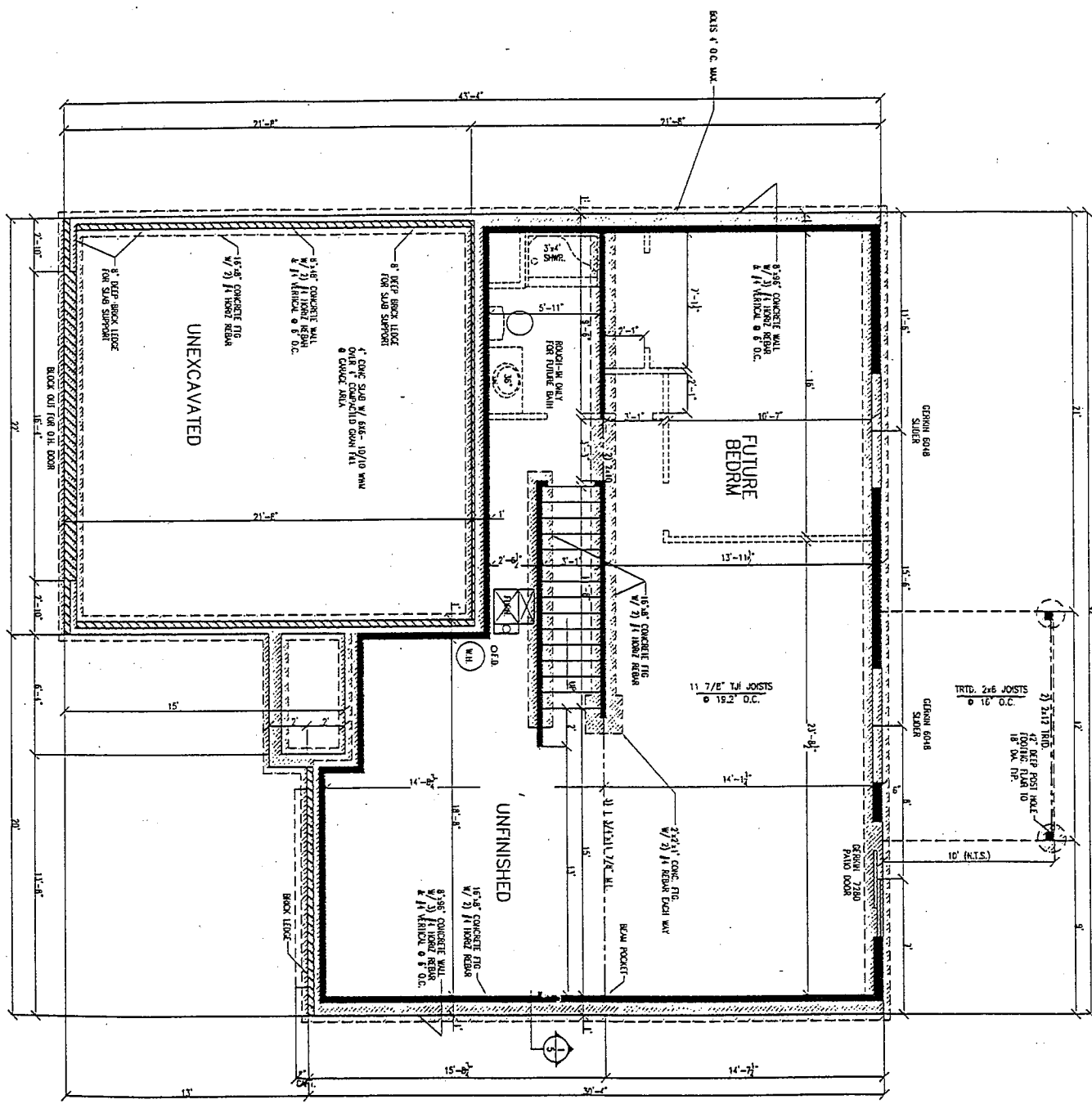


THIS PLAN IS TO BE USED IN CONNECTION WITH THE FOUNDATION PLAN FOR THE "WOODLAND" 2 STORY HOME BY SOUTHGATE DEVELOPMENT. THE FOUNDATION PLAN IS TO BE USED IN CONNECTION WITH THE FOUNDATION PLAN FOR THE "WOODLAND" 2 STORY HOME BY SOUTHGATE DEVELOPMENT. THE FOUNDATION PLAN IS TO BE USED IN CONNECTION WITH THE FOUNDATION PLAN FOR THE "WOODLAND" 2 STORY HOME BY SOUTHGATE DEVELOPMENT.



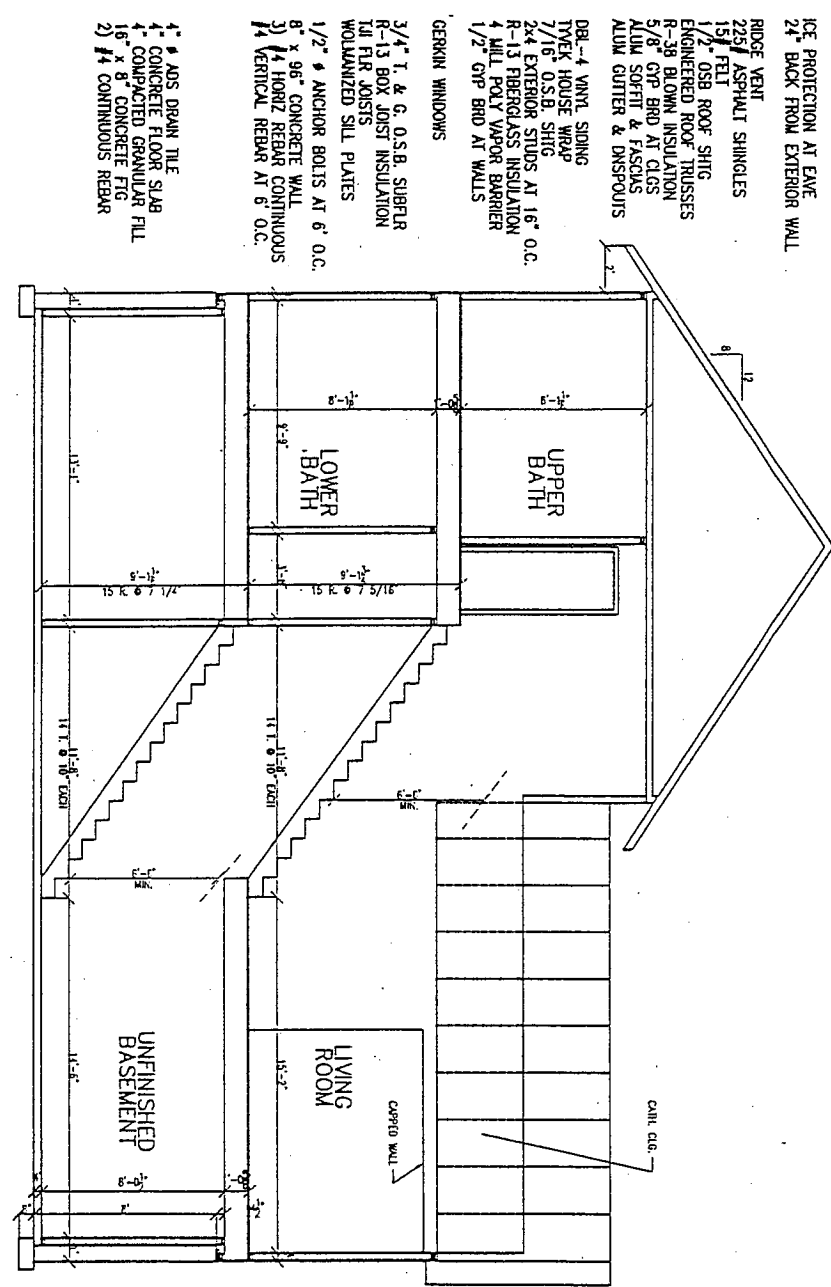
- FOUNDATION NOTES:**
1. 2000 P.S.F. SOIL BEARING PRESSURE ASSUMED FOR FOOTING DESIGN IF MATERIAL CONDITIONS ARE UNCHANGED FROM DESIGN CONDITIONS.
 2. DO NOT EXCAVATE ANYWHERE UNLESS SPECIFICALLY NOTED OTHERWISE.
 3. 3000 P.S. CONCRETE (NORMAL).
 4. DO NOT PLACE ANY FOOTING OR CONCRETE ON UNDESIGNED OR UNDESIGNED SOIL - OVERLAP AND EXTEND CONCRETE REINFORCING SILE AND SPACING BY OTHERS.

DATE	1/21/02	BY	MS
REVISION	5/20/02	BY	MS
	07-2387		

"WOODLAND" 2 STORY HOME
 BY SOUTHGATE DEVELOPMENT

Untrauer's Drafting Service
 2878 STERLING DRIVE, IOWA CITY, IOWA 52240 (319) 338-5966

I certify that the drawings and specifications herein are the work of me or under my direct supervision and that I am a duly licensed professional engineer in the State of Iowa. I also certify that the drawings and specifications herein are a true and correct copy of the original drawings and specifications.



1 CROSS SECTION
 5 1/4" = 1'-0"

- ICE PROTECTION AT EAVE
- 24" BACK FROM EXTERIOR WALL
- ROOF VENT
- 22S ASPHALT SHINGLES
- 1 1/2" FELT
- 1 1/2" OSB ROOF SHIG
- ENGINEERED ROOF TRUSSES
- R-38 BLOWN INSULATION
- 5/8" GYP BRD AT CLGS
- ALUM SOFRT & FASCIA
- ALUM GUTTER & DNRPOUIS
- DBL-4 VANT SIDING
- TYEK HOUSE WRAP
- 7/16 O.S.B. SHIG
- 2x4 EXTERIOR STUDS AT 16" O.C.
- R-13 FIBERGLASS INSULATION
- 4 MILL POLY VAPOR BARRIER
- 1/2" GYP BRD AT WALLS
- GEMIN WINDOWS
- 3/4" T. & G. O.S.B. SUBFLR
- R-13 BOX JOIST INSULATION
- T&I FLR JOISTS
- WOLMANIZED SILL PLATES
- 1/2" # ANCHOR BOLTS AT 6' O.C.
- 8" x 96" CONCRETE WALL
- 3) #4 HORIZ REBAR CONTINUOUS
- 4) VERTICAL REBAR AT 6' O.C.
- 4" # ADS DRAIN TILE
- 4" CONCRETE FLOOR SLAB
- 4" COMPACTED GRANULAR FILL
- 16" x 8" CONCRETE FKG
- 2) #4 CONTINUOUS REBAR